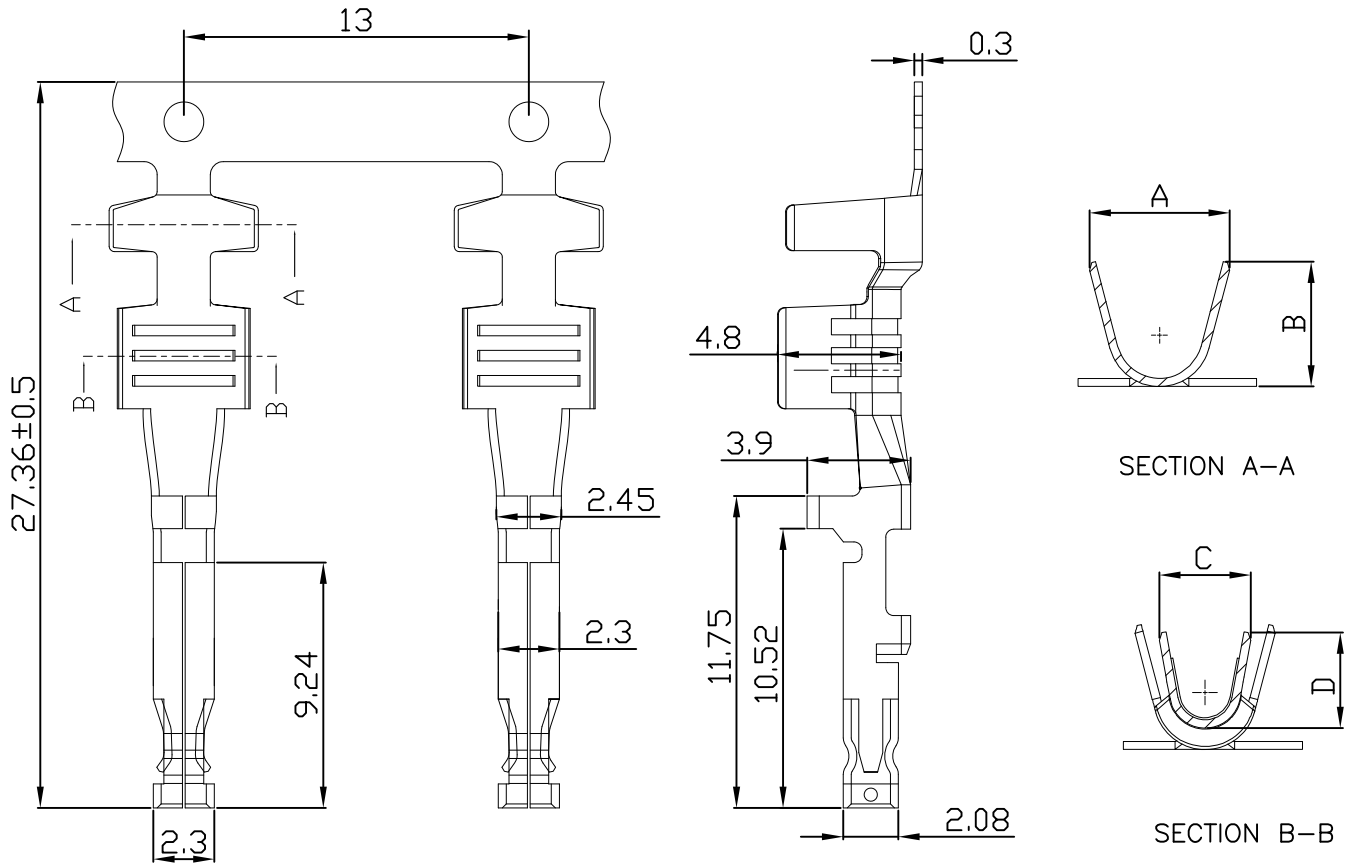




仅供参考

REV.	REVISION RECORD	DATE
A0	新图面发行	2017.06.16

Specifications:  
 Voltage Rating : 600V AC/DC  
 Current Rating : 10A AC,DC  
 Withstand Voltage : 2200V AC/minute  
 Contact Resistance : 10mΩ(MAX.)  
 Insulation Resistance : 1000MΩ(MIN.)  
 Temperature Range : -40°C~+105°C



Wire size	
AWG	Max Ins Dia
#12, 4mm²	4.11mm
#14, 2.5mm²	3.75mm
#16, 1.5mm²	3.18mm

Part NO	Wire range	DIM A	DIM B	DIM C	DIM D
45702TOP-01	#14~#16	4.80	4.65	3.40	3.55
45702TOP-02	#12	5.20	5.30	4.80	4.85

Wire Range	Material	Finish	Qty/reel
AWG #12~#16	High conductivity copper alloy	Tin-plated	

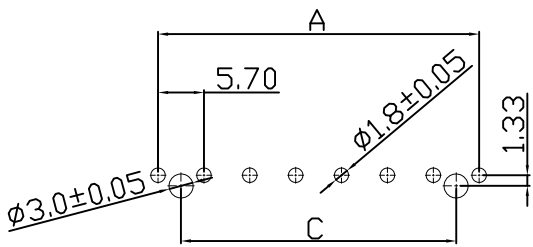
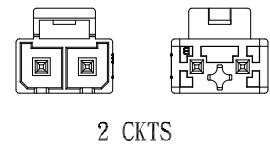
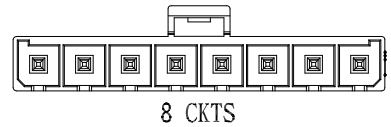
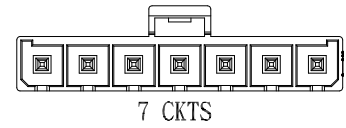
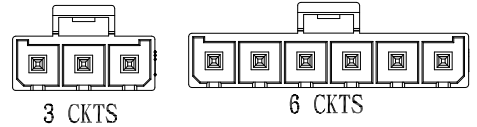
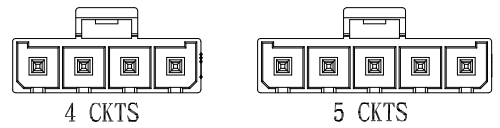
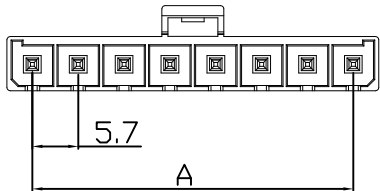
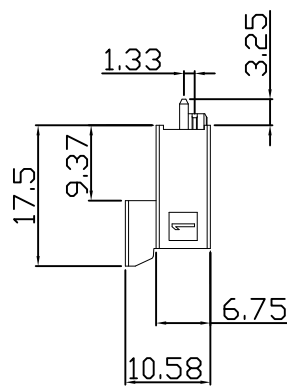
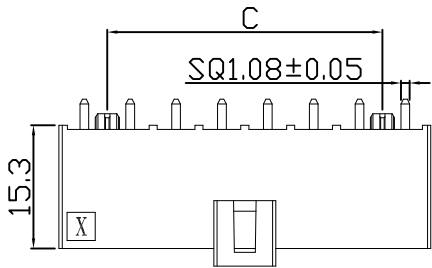
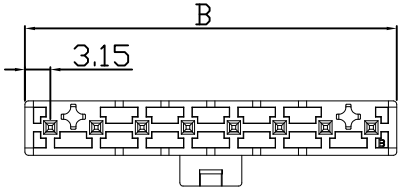
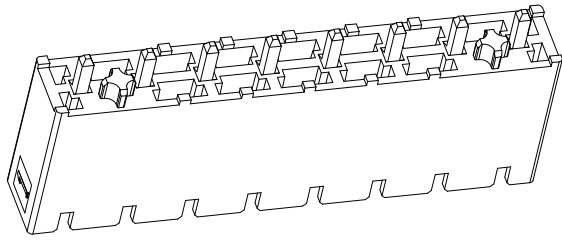
GENERAL TOLERANCES	SCALE: 1:1	NAME	DATE	PART NO: STP45702TOP-**
0.0±0.35	X° REF±6°	DESIGNER		REV: A0
UNIT: MM	0.00±0.25	X° ±3°		SHEET: 1/1
SIZE: A4	0.000±0.15	X° X'±2°		
	DRAWN	肖坤权	2017.06.16	
	TITLE: 5.70mm pitch Crimp Terminal			

**STP** 深圳市思拓展电子有限公司  
 SHENZHEN SINOTOP ELECTRONICS CO., LTD  
 公司网址: www.szstuo.cn 公司电话: 0755-23765350  
 电子邮箱: 2850175982@qq.com 公司传真: 0755-23765341

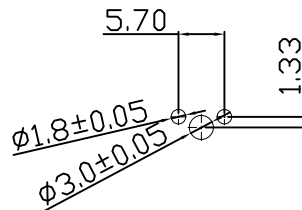
仅供参考

REV.	REVISION RECORD	DATE
A0	新图面发行	2017.06.16

Specifications:  
 Voltage Rating : 600V AC/DC  
 Current Rating : 10A AC,DC  
 Withstand Voltage : 2200V AC/minute  
 Contact Resistance : 10mΩ(MAX.)  
 Insulation Resistance : 1000MΩ(MIN.)  
 Temperature Range : -40°C~+105°C



PCB board layout



2P PCB board layout

Circuits	DIM A	DIM B	DIM C
2	5.70	12.00	
3	11.40	17.70	5.70
4	17.10	23.40	11.40
5	22.80	29.10	17.10
6	28.50	34.80	22.80
7	34.20	40.50	28.50
8	39.90	46.20	34.20

Material	Color	PIN Material
LCP,UL94V-0	BLACK	High conductivity copper/Tin&Ni-plated

	GENERAL TOLERANCES		SCALE:	NAME	DATE
	LINEAR	ANGLES	1:1		
	0.0±0.35	X° REF±6°	APPROVED		
UNIT: MM	0.00±0.25	X° ±3°	DESIGNER		
SIZE: A4	0.000±0.15	X° X'±2°	DRAWN	肖坤权	2017.06.16

深圳市思拓展电子有限公司  
 SHENZHEN SINOTOP ELECTRONICS CO.,LTD  
 公司网址: www.szstuo.cn 公司电话: 0755-23765350  
 邮 箱: 2850175982@qq.com 公司传真: 0755-23765341

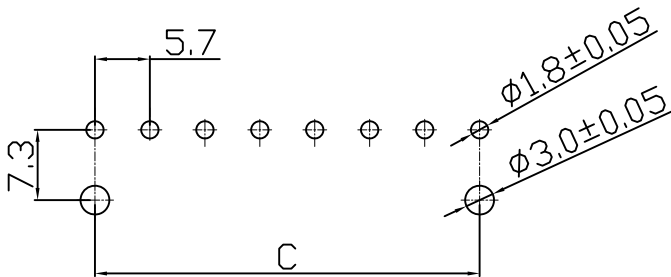
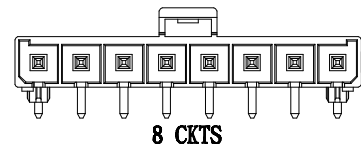
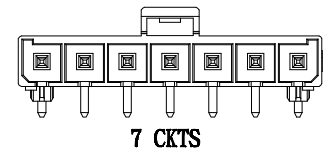
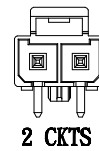
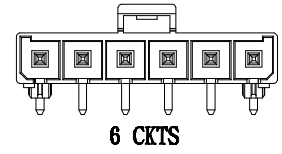
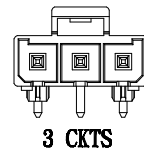
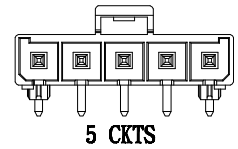
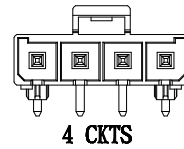
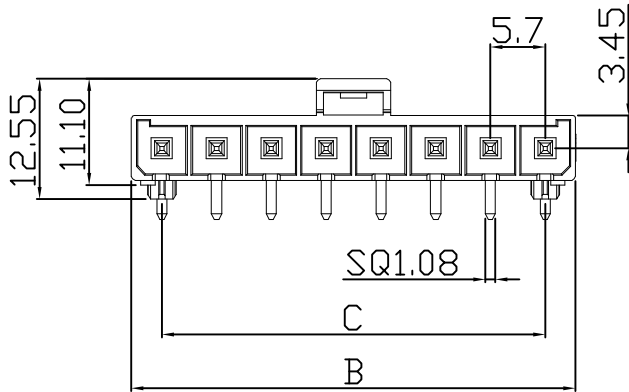
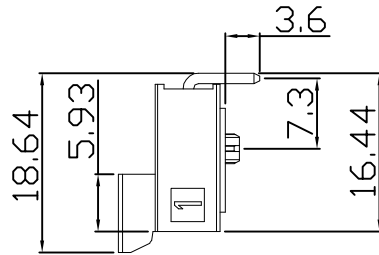
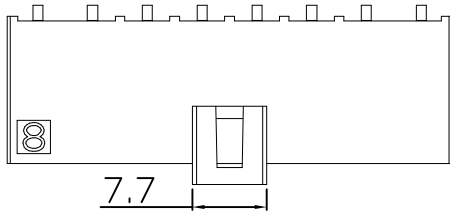
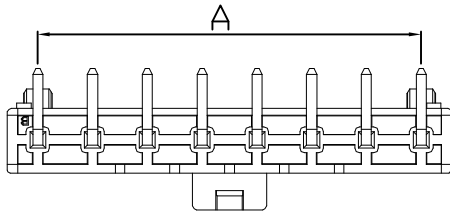
PART NO:	STP45072W00-NPX-A1
DWG NO:	
REV:	A0
SHEET:	1/1

TITLE: 5.70mm pitch Dual WAFER

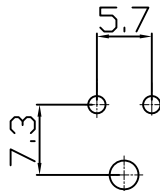
仅供参考

REV.	REVISION RECORD	DATE
A0	新图面发行	2017.06.16

Specifications:  
 Voltage Rating : 600V AC/DC  
 Current Rating : 10A AC,DC  
 Withstand Voltage : 2200V AC/minute  
 Contact Resistance : 10mΩ(MAX.)  
 Insulation Resistance : 1000MΩ(MIN.)  
 Temperature Range : -40°C~+105°C



PCB board layout



2P PCB board layout

Circuits	DIM A	DIM B	DIM C
2	5.70	12.00	
3	11.40	17.70	11.40
4	17.10	23.40	17.10
5	22.80	29.10	22.80
6	28.50	34.80	28.50
7	34.20	40.50	34.20
8	39.90	46.20	39.90

Material	Color	PIN Material
LCP,UL94V-0	BLACK	High conductivity copper/Tin&Ni-plated

	GENERAL TOLERANCES		SCALE: 1:1	NAME	DATE
	LINEAR	ANGLES			
	0.0±0.35	X° REF±6°	APPROVED		
UNIT: MM	0.00±0.25	X° ±3°	DESIGNER		
SIZE: A4	0.000±0.15	X° X'±2°	DRAWN	肖坤权	2017.06.16

深圳市思拓展电子有限公司  
 SHENZHEN SINOTOP ELECTRONICS CO.,LTD  
 公司网址: www.szstuo.cn 公司电话: 0755-23765350  
 邮 箱: 2850175982@qq.com 公司传真: 0755-23765341

TITLE: 5.70mm pitch Dual WAFER

PART. NO:	STP45702W90-NP*-PT
DWG. NO:	
REV:	A0
SHEET:	1/1