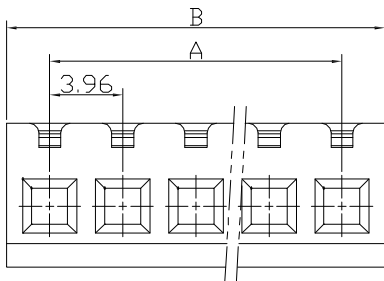
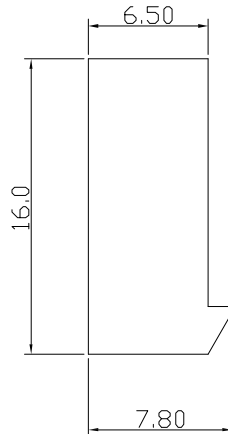
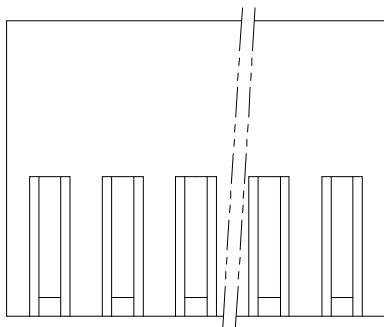
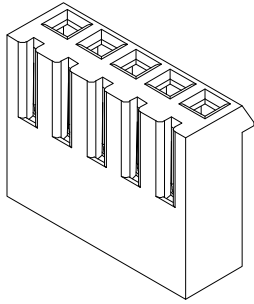


仅供参考


| | | |
|------|-----------------|------------|
| REV. | REVISION RECORD | DATE |
| A0 | 新图面发行 | 2017.06.16 |

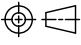
主要技术参数 Main Specifications

- 线数 (Poles): 02 to 16
- 接触电阻 (Contact resistance): $\leq 20m\Omega$
- 绝缘电阻 (Insulation resistance): $\geq 1000M\Omega$
- 额定电压 (Rated voltage): 250V AC DC
- 额定电流 (Rated current): 7.0A AC DC
- 耐电压 (Withstand Voltage): 1500V AC/minute
- 温度范围 (Temperature Range): $-25^{\circ}C \sim +85^{\circ}C$



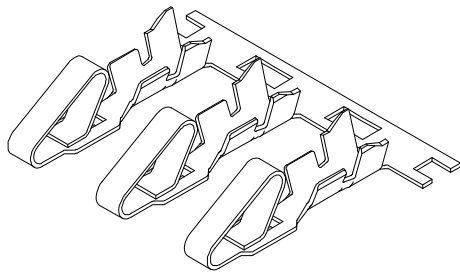
| Poles | Dimensions mm | |
|-------|---------------|-------|
| | A | B |
| 2 | 3.96 | 8.68 |
| 3 | 7.92 | 12.64 |
| 4 | 11.88 | 16.60 |
| 5 | 15.84 | 20.56 |
| 6 | 19.80 | 24.52 |
| 7 | 23.76 | 28.48 |
| 8 | 27.72 | 32.44 |
| 9 | 31.68 | 36.40 |
| 10 | 35.64 | 40.36 |
| 11 | 39.60 | 44.32 |
| 12 | 43.56 | 48.28 |
| 13 | 47.52 | 52.24 |
| 14 | 51.48 | 56.20 |
| 15 | 55.44 | 60.16 |
| 16 | 59.40 | 64.12 |

| | | | | | |
|--|---------------|----------------|-----------------|-----------------------------|-----------------------|
| 1 | Housing 胶壳 | PA66 (UL94V-2) | 1 | Transparent 透明白色 | |
| 序号 | 图号 | 名称 | 材料 | 数量 | 附注 |
|  深圳市思拓展电子有限公司 SHENZHEN SINOTOP ELECTRONICS CO., LTD 公司网址: www.szstuo.cn 公司电话: 0755-23765350 邮 箱: 2850175982@qq.com 公司传真: 0755-23765341 | | | | PART. NO: ST-WF-396-001Y | |
| TITLE: 3.96mm PITCH HOUSING | | | | DWG. NO: | |
| DRAWN 肖坤权 | | | DATE 2017.06.16 | | REV: A0 SHEET: 1/1 |

| | | | | | |
|--|--------------------|-------------|---------------|------|------------|
|  | GENERAL TOLERANCES | | SCALE: 1:1 | NAME | DATE |
| | LINEAR | ANGLES | APPROVED | | |
| UNIT: MM | 0.0 ± 0.30 | X° REF ± 6° | DESIGNER | | |
| SIZE: A4 | 0.000 ± 0.10 | X° X' ± 2° | DRAWN | 肖坤权 | 2017.06.16 |

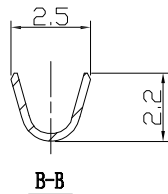
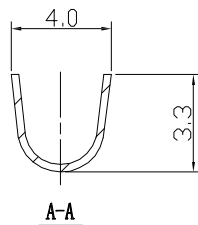
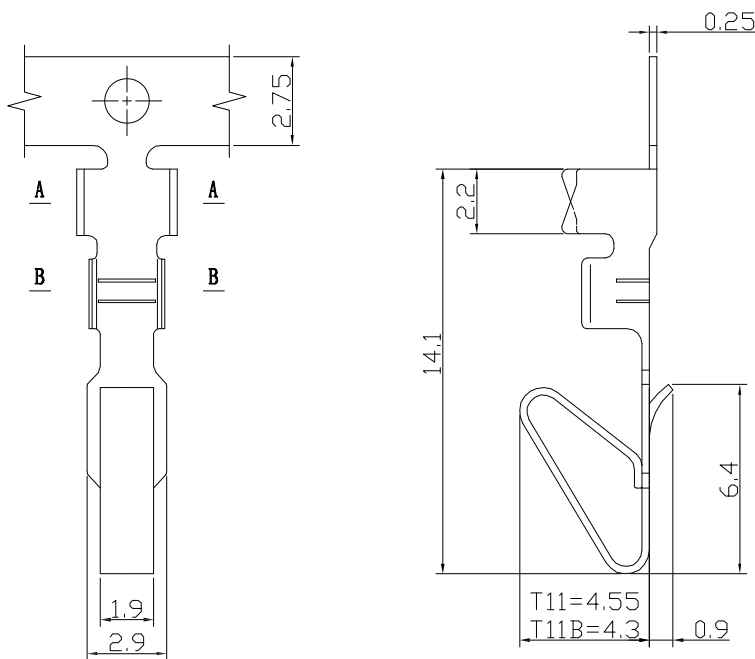
仅供参考

| REV. | REVISION RECORD | DATE |
|------|-----------------|------------|
| A0 | 新图面发行 | 2017.06.16 |



主要技术参数
Main Specifications

线数 (poles): 2 to 16P
 额定电流 (Current rating): 7.0A AC, DC
 额定电压 (Voltage rating): 250V AC, DC
 温度范围 (Temperature range): -25°C to +85°C
 接触电阻 (Contact resistance): $\leq 20m\Omega$
 绝缘电阻 (Insulation resistance): $\geq 1000M\Omega$
 耐电压 (Withstand voltage): 1500V AC/minute
 适用线规 (Applicable wire): AWG #24 to #18
 适用基板厚度 (Applicable PC board thickness): 1.6mm



| Wire Range | Insulation O. D. | Material | Finish | Qty/Reel |
|-------------|------------------|-----------------|------------|-------------------|
| AWG #18~#24 | | Phosphor bronze | Tin-plated | 5000PCS/Reel (1盘) |

| | | | | | | | | |
|----------|--------------------|-----------|------------------------------|-------|------|---|----------------|--------------------|
| | GENERAL TOLERANCES | | SCALE: 1:1 | NAME | DATE | 深圳市思拓展电子有限公司 SHENZHEN SINOTOP ELECTRONICS CO., LTD 公司网址: www.szstuo.cn 公司电话: 0755-23765350 邮 箱: 2850175982@qq.com 公司传真: 0755-23765341 | PART. NO: | |
| | LINEAR | ANGLES | APPROVED | | | | ST-WF-396-001T | |
| | 0.0±0.30 | X° REF±6° | DESIGNER | | | | DWG. NO: | |
| | UNIT: MM | 0.00±0.20 | X° ±3° | DRAWN | 肖坤权 | | 2017.06.16 | REV: A0 SHEET: 1/1 |
| SIZE: A4 | 0.000±0.10 | X° X'±2° | TITLE: 3.96mm PITCH TERMINAL | | | | | |